

INFORMATION YOU CAN MANAGE
Syburst Transportation Order Management Solution



Syburst®

© 2007 Syburst and/or its affiliates and subsidiaries. All rights reserved. This document is for informational purposes only, and the contents hereof are subject to change without notice. This document is not warranted to be error-free, nor it is subject to any other warranties or conditions, whether expressed orally or implied in law, including implied warranties and conditions of merchantability or fitness for a particular purposes. We specifically disclaim any liability with respect to this document, and no contractual obligations are formed either directly or indirectly by this document. This document may not be reproduced or transmitted in any forms or by any means, electronic or mechanical, for any purpose without prior written permission.



Increase customer loyalty.
Maximize cross selling opportunity.
Drive sales revenue.

INFORMATION YOU CAN MANAGE

In transportation and logistics, the domestic business has traditionally gained the most attention from business organizations. **But globalization requires new approach.** In addition to local consideration, companies must now deal with complex and diversified, cross-border supply chain, as well as the less efficient manual processes, longer lead times, and greater risk and number of regulatory of requirements that characterizing the supply chain.



Transportation Order Management Solution

Syburst Advanced Solution > SCM > Transportation Order Management Solution

New demanding opportunity to improve your logistics business performance

Lack of data and disintegrated system without a clear business mapping causes inaccurate information regarding your distribution activities. The problem is obviously present if your organization has been dealing with common issues related to:

- Inaccurate logistics cost?
- Fuel price hike?
- Shipping the wrong products?
- Shipping inaccurate quantity?
- Frequent late deliveries?
- Below capacity fleet utilization?
- Increasing fleet back haul?
- Unable to track fleet position?
- High customer charge-back expenses?
- Running on thin EBIT and EBIT margin?

In several developed countries, such as US, Canada, UK and Australia, distribution management program related information have been developed and systematically maintained, managed and analyzed to help transporter to understand and know well their customers and key business factors; and to promote safety management. Such system is known as Transportation Order Management. It is moving all transactional data into one warehouse and uses an EIS application to better understand customers and maximize the potential of distribution program.



Integrated supply chain management and logistics software that direct your freight flow activity

Syburst Supply Chain Management Solution from Syburst Technologies brings the entire supply chain execution process together in one integrated logistics solution.

This innovative supply chain management and logistics software allows you to control orders from multiple sources, provides electronic storefront capabilities, organizes inventory of all types, directs and executes entire logistics operations, manages customer accounts and tracks every shipment, and integrates accounting processes in real-time.

With **Syburst Supply Chain Management Solution**, you can maximize your investment in distribution facilities and equipment, even extending execution capabilities beyond your four walls to increase visibility through trading partner collaboration.

A complete solution

The solution offers control over everything from distributed order fulfillment to financial management. This feature-rich solution facilitates the requirements of the most complex distribution operations. The **Elite Series** is designed to bring focus and operational clarity to high volume enterprise supply chain environments while The **Fleet Director** provides small to medium size businesses with the solutions they need to grow and success in today's competitive landscape.

Organizations using **Syburst Transportation Order Management Solution** have taken control of their fulfillment management operations, reduced costs, and increased customer service levels, while providing exceptional on-time delivery and partner visibility to information.

The solution also gives you tools sitting on top of a large and valuable data warehouse to enable you to mine the information and gather intelligence on how your logistics work. It is flexible enough to accommodate your business to be one that would keep you moving forward, not one that could possibly require you backtrack and redesign anything.



Take control of your transportation activities, build lasting customer relationships and minimize costs with Syburst Transportation Order Management Solution

From the first mile to the last mile, the software delivers a complete solution footprint for handling all your transportation planning and execution across multiple transportation modes.

Now you can determine what your supply chain should look like, how much fleet size is necessary and which the most cost efficient outsourcing party. You can secure better rates with carriers, develop and execute transportation plans for owned and contracted assets, create the most efficient logistical routing for optimal results and improve visibility from order inception to delivery.

The solution expands your business potentials with smooth integration that consolidates entire transportation process, namely **Transportation Order, Transportation Planning, Transportation Execution, Transportation Tracking** and **Transportation Settlement**.

With the solution, your business have all the tools needed to determine the most cost effective way to meet service commitments by creating optimal collaboration among your logistics activities while best utilizing transportation assets and carriers.

Benefits

■ Streamline business process

Take control of your transportation activities, improve accuracy and increase your fleet utilization by automating routine transportation order. Utilize a workflow approval process over existing transportation orders over designated area.

■ Reduce operational costs

Reduce repetitive data entry and help eliminate costly mistakes by moving your requisition process online. Enter and manages transportation activities from one central location anytime.

■ Access operational critical information

Get instant answers to questions and maintain complete delivery status with detailed information and tracking management capabilities. Track and analyze transportation activities with a comprehensive selection of reports.

■ Establish long-term contracts with customers

Gain customer satisfaction and loyalty by improve your ability to fully control entire transportation activities.

Solution Overview

Syburst Transportation Order Management Solution is a unique solution for managing transportation management. It is an application used to:

- Manage customer profile
- Administer fleet owned, contracted, leased and outsourced
- Activate marketing channel
- Monitor and verify goods distribution
- Manage goods distribution
- Facilitate fleet and cargo utilization
- Facilitate routing planning
- Report result and performance of logistics activities
- Request and manage transportation order change
- Facilitate customer and transportation intelligence

Modules and Features

- **Transportation Order**
 - *Generate tariff calculation based on customer, commodity and route*
 - *Tailor order entry and fulfillment by creating profiles for customers, shipping origin and destination that automatically populate the sales order*
 - *Generate quotation for customer or marketing order*
 - *Quick access to detailed customer information such as your customers' usual, latest, and standing orders*
 - *Automated identification cross-sell and up-sell opportunities, minimizing fleet back haul*
 - *Make delivery promises based on real-time fleet availability to promise and shipping capability to promise*
 - *Real time respond to customer inquiries by viewing the status of any order, at any stage of the fulfillment cycle*
- **Transportation Planning**
 - *Analyze shipment orders based on origin and destination locations; consolidate them into loads and determine the most appropriate ways to move these loads based on constraints such as delivery dates and cost*
 - *Fleet allocation planning based on order, fleet type, fleet availability*
 - *Optimize a wide range of shipping decisions with vehicle routing, pooling, aggregation, inbound or outbound integration*
- **Transportation Execution**
 - *Profile orders based on customer demand, align territories and zones to support demand, take driver and other business rules into account, optimize service and consolidation locations and increase freight consolidation opportunities without reducing service levels*
 - *Determine route plans and scheduling, including pickup and delivery sequences on a daily or real time basis while maximizing fleet and driver utilization*
 - *Generate shipping document*
 - *Administer dynamic sourcing, field service planning, and line-haul scheduling*
- **Transportation Tracking**
 - *View and control fleet position at vehicle level and shipping point activity*
 - *Monitor shipping and automatically respond to any user-defined exceptions, issues, or opportunities requiring immediate action*
- **Transportation Settlement**
 - *Used to consolidate financial reporting related to transportation activities, such as trip expenses and insurance claim*
- **Report**
 - *Used to display all module reports in either pre-defined or self-customization report to support ad hoc reporting*
- **Administration**
 - *Used to manage application, system security and master data*



Feature Rich Module > Cargo Optimizer (SMART LOAD®)

Cargo Optimizer is an optimizer tools for cargo that benefits not only transportation, logistics, distribution, packaging companies but also any company within or related to supply chain and distribution channel, including manufacturers, exporters and importers.

Cargo optimization, analysis, and loading aid for higher freight utilization

It helps you and your organization to calculate optimum solutions when loading containers, cutting lengths or sheets, and designing packaging that resulted in least cost, best packing and highest profit.

Cargo Optimizer slashes time that you take to work out the best solution to your cargo and packaging problems. It will answer following questions instantly.

- How many packages can be loaded into a 40 foot container?
- What is the most efficient load plan?
- How many containers and sizes do we need for this shipment?

Cargo Optimizer handles regularly shaped containers such as ocean containers, trucks and refrigerated units. Plus it offers several advanced options a follows.

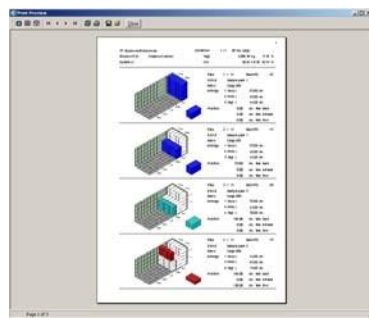
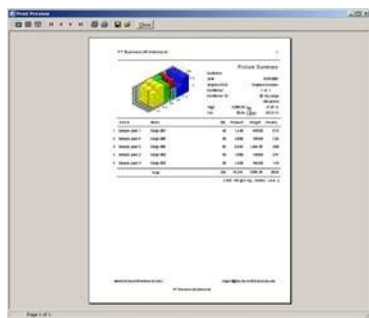
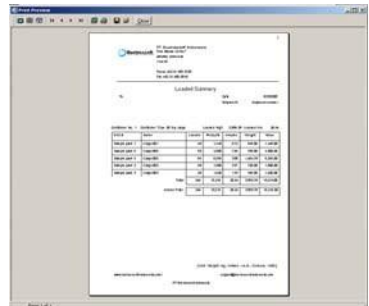
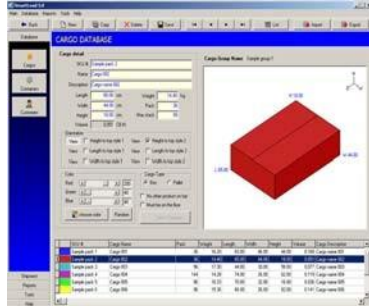
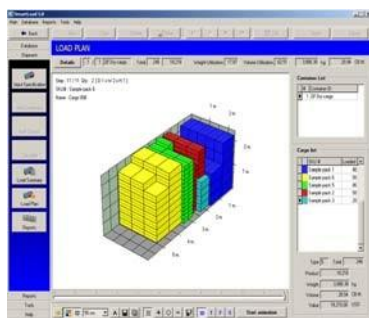
- Loading by sequence
- Loading by FILO (First In Last Out)
- Multiple container sizes per shipment with no limit in container sizes
- Multiple package sizes per shipment with no limit in package sizes
- Manual optimization override
- Calculate costing and cost per package being shipped
- Calculate maximum capacity for group cargo

Cargo Optimizer Features

As an important part of Order Processing in Syburst Supply Chain Management Solution, Cargo Optimizer consists of following features:

- Box Designer
- Cargo Database
- Container Database
- Customer Database
- Input Specification
- Load Options
- Load Summary
- Load Plan

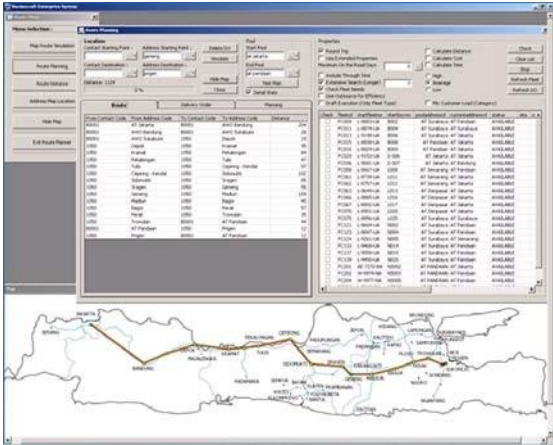
Cargo Optimizer Module Captures



Feature Rich Module > Routing Planning (SMART TRACK®)

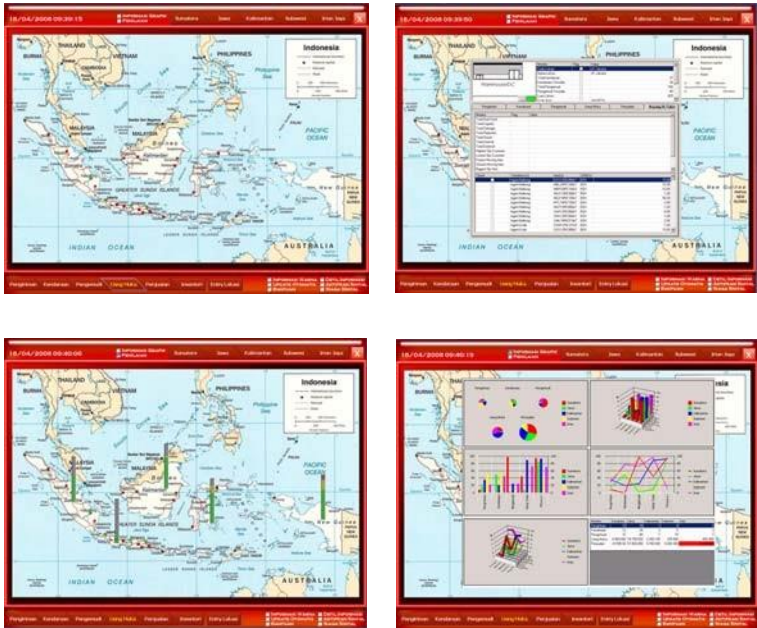
Routing Planning from Syburst Technologies is used for route optimization, analysis and scheduling aid for better logistical plans. It is sophisticated routing guide for smart carrier recommendation that could help your business save significant transportation cost and time.

Plan Your Routing for Better Distribution Scenario



Feature Rich Module > Syburst Intelligence®

Syburst Intelligence from Syburst Technologies for Transportation Order Management Solution is designed to enable your executive management control and monitor all business performance in single view. It features direct visualization of business performance instead just overall and detail summary in form of data and number. The solution makes your able to drill down to real time detail operational data, improve logistics performance across entire supply chain point, and combine all KPI into one simple formulation to justify your business health.





Technology and Technical Features

- Platform:
 - Development: .NET 3.5
 - Server: Windows Server 2003/2008
 - DBMS / Backend DB: SQL Server 2005/2008
 - Web server: IIS 6.0/7.0
 - OS: Windows XP
- Support Crystal Report and reporting services
- Flexible report creation
- Syburst Advanced Solution to accommodate specific business process
- Compatible with LDAP Directory Service
- Featuring Single On
- Pure web based (ActiveX or Applet not required)
- Modular architecture
- Easy server deployment
- Standard navigation and transaction control
- Easy to maintain and no back end administrative task
- Support GPS, SMS and Email interfacing
- Intuitive, easy-to-use and sophisticated GUI
- Integrated to Windows Active Directory
- Support Oracle Finance interfacing
- Support Oracle Inventory interfacing
- Support Oracle Purchasing interfacing
- Adopt business practice and best practice
- Traceability with Audit Trail
- Approval and Delegation functionality

About Syburst

Syburst delivers business specific software for ERP, SCM, MRP, MES, CRM, and EIS to enterprising organizations. With experience built in, Syburst's solution enables business of all industries to be more enterprising and adapt to the rapid changes of a global marketplace. With our passion and commitment to envision the enterprising business solution, Syburst is changing what businesses expect from an enterprise software provider.



Representative Office

Syburst Suites
Rasuna Epicentrum Walk A527-531, 5th floor
Rasuna Epicentrum
Jl. HR Rasuna Said, Jakarta 12960
Indonesia
E info@syburst.com
P +62 21 375 306 29
F +62 21 560 2810

<http://www.syburst.com>

B883SDW-020112